



JUVENILE INJUSTICE

By Richard Ross



Above: Six youths rest in their cells at midday from a regimen that begins at 4:45 A.M. at the Challenge program in El Paso, Texas. The facility was formerly a boot camp.

Opposite page: A twelve-year-old in his cell, where the window has been boarded up from the outside, at Harrison County Juvenile Detention Center in Biloxi, Mississippi. The facility is operated by Mississippi Security Police, a private company.

For the past five years, Richard Ross has interviewed and photographed more than 1,000 juvenile detainees, some as young as eight years old, in more than 350 detention facilities in thirty states. Of the series, Ross states: "In a country that incarcerates one out of every one hundred adults, the juveniles have the least voice and are the smallest victims of a system under stress."

Richard Ross is a photographer based in Santa Barbara, California. This series will be on view at the Nevada Museum of Art in the fall of 2012. His monograph Architecture of Authority was published by Aperture in 2007.



This page, from top: Hale Ho'omalū Juvenile Detention Facility, Honolulu, built during World War II and recently closed.

P-Hall, a transitional unit where juvenile prisoners go after intake for evaluation and placement. King County Youth Service Center, Seattle.

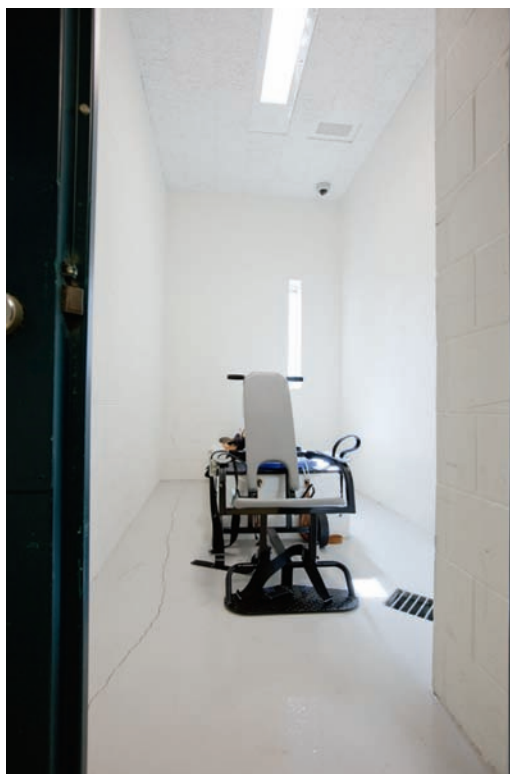
Opposite page, clockwise from top: Police van, San Francisco. Juveniles are placed in this box within the van when adult prisoners are present, as the law prohibits holding juveniles and adults together.

Maryvale, an all-girls treatment center in Rosemead, California. Most of the girls who come to Maryvale are victims of sexual abuse.

A fifteen-year-old inmate held in maximum security at Ethan Allen School in Wales, Wisconsin.







This page, clockwise from top: Young men at Orleans Parish Prison, New Orleans.

Restraining chair at Mendota Juvenile Treatment Center in Madison, Wisconsin.

Restraining table at MacLaren Youth Correctional Facility in Woodburn, Oregon.

Opposite page: A confinement cell at Miami-Dade Regional Detention Center, Florida. The maximum legal confinement-cell time is sixteen hours. This male juvenile said he had been here for seventy-two hours.

